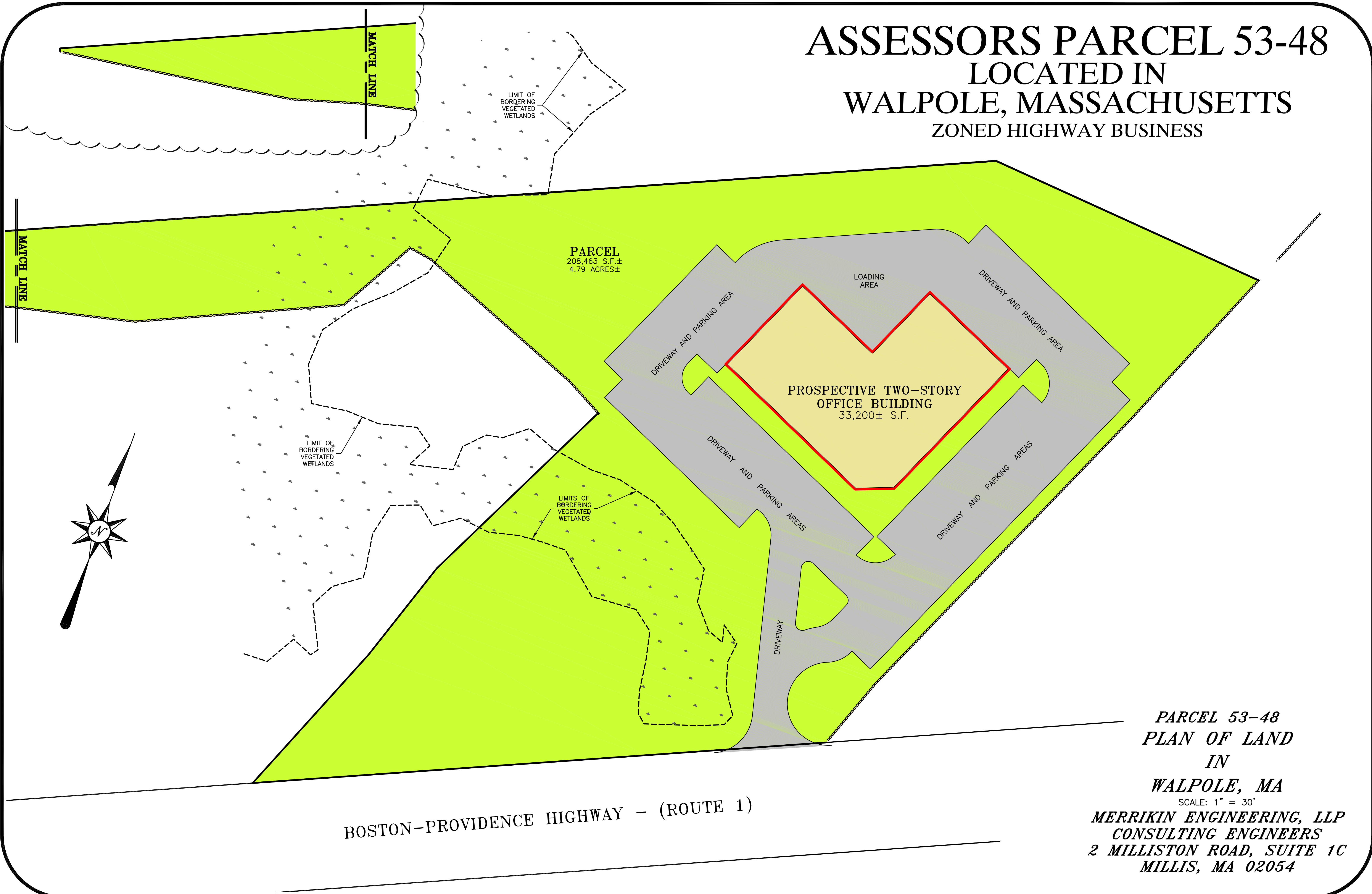


ASSESSORS PARCEL 53-48 LOCATED IN WALPOLE, MASSACHUSETTS ZONED HIGHWAY BUSINESS



PARCEL
208,463 S.F.±
4.79 ACRES±

PROSPECTIVE TWO-STORY
OFFICE BUILDING
33,200± S.F.

LOADING
AREA

DRIVEWAY AND PARKING AREA

DRIVEWAY AND PARKING AREA

DRIVEWAY AND PARKING AREAS

DRIVEWAY AND PARKING AREAS

DRIVEWAY

BOSTON-PROVIDENCE HIGHWAY - (ROUTE 1)

*PARCEL 53-48
PLAN OF LAND
IN
WALPOLE, MA*

SCALE: 1" = 30'
*MERRIKIN ENGINEERING, LLP
CONSULTING ENGINEERS
2 MILLISTON ROAD, SUITE 1C
MILLIS, MA 02054*